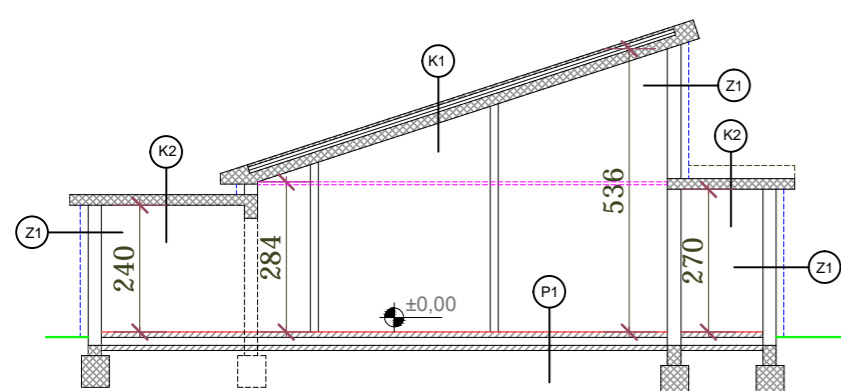
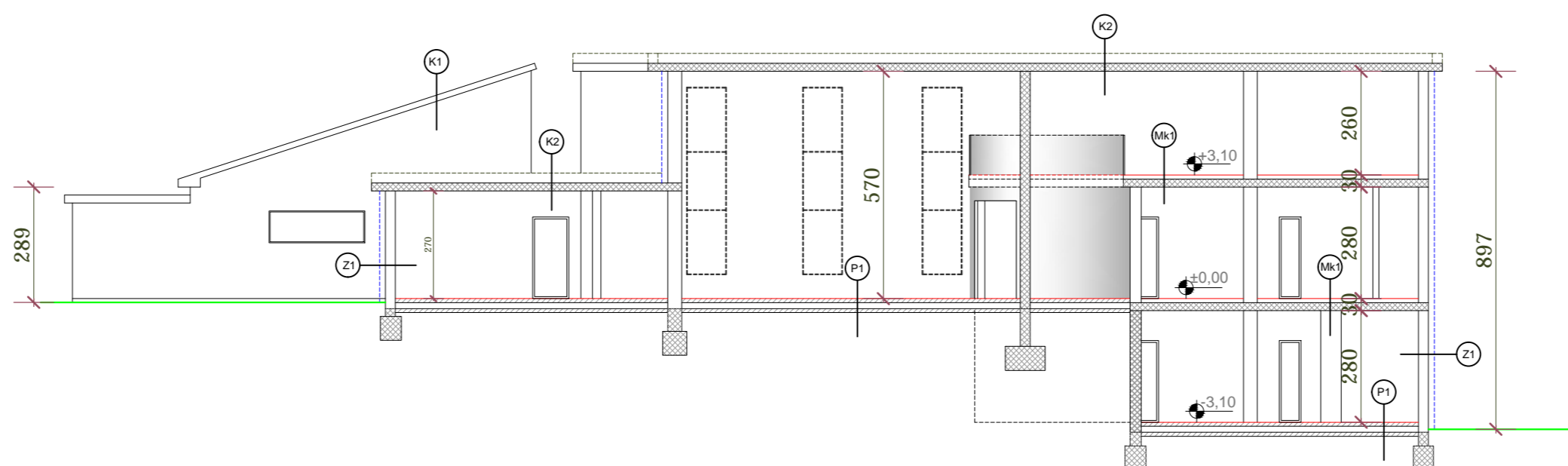


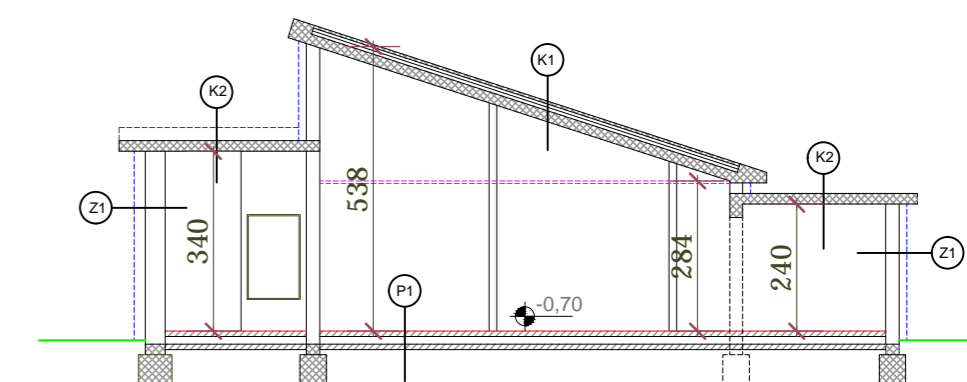
PRESJEK B-B



PRESJEK A-A



PRESJEK C-C



P1

- završna hodna obloga	2,0 cm
- cem. estrih	8,0 cm
- polietilen	
- XPS	2×7,0 cm
- bitumenska traka s uloškom staklenog voala	1,0 cm
- armirani beton	10,0 cm
- tucanik	15,0 cm

Mk1

- završna hodna obloga	2,0 cm
- cem. estrih	6,0 cm
- polietilenska folija	
- stiropor EPS 100	2,0 cm
- AB ploča	20,0 cm

Z1

- vapneno-gipsana žbuka	2,0 cm
- blok opeka	25,0 cm
- mineralna vuna	15,0 cm
- završna akrilna žbuka	0,37 cm

K1 (kosi krov)

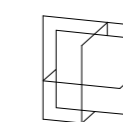
- kanalice	
- hidroizolacija	
- estrih	5,0 cm
- XPS	15,0 cm
- parna brana	
- AB ploča	20,0 cm

K2 (ravni neprohodni krov)

- polimerna hidroizolacijska traka	
- betonska podloga u padu	8,0 cm
- polietilen	
- XPS	8,0 cm
- XPS	8,0 cm
- parna brana	
- AB ploča	20,0 cm

MAPA 1 - ARHITEKTONSKI PROJEKT

IGMA
inženjering d.o.o.
Trg Istarske brigade 10



Zgrada:	predškolska ustanova - dječji vrtić	
Sadržaj:	PRESJECI	elab.: 110/110/16
Ovl. projektant:	Dina Kuzmanović, dipl.ing.arh.	zaj.ozn.110/16
Suradnik:	Igor Kuzmanović, ing.grad.	mjerilo: 1:150
Investitor:	OPĆINA MARČANA	datum: 10/2016
Lokacija:	k.č. 1167/1, k.o. Marčana	list br.: 7